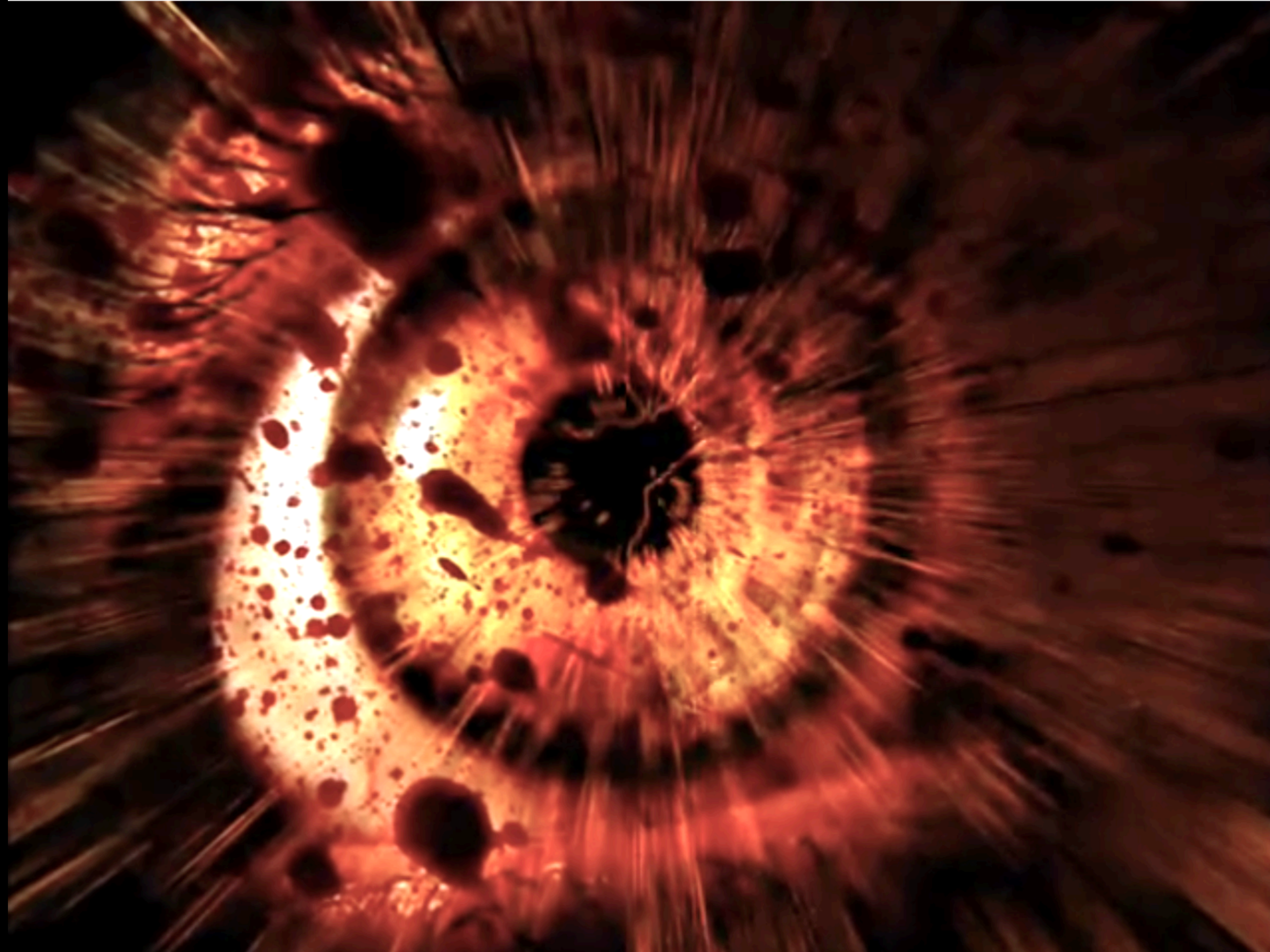


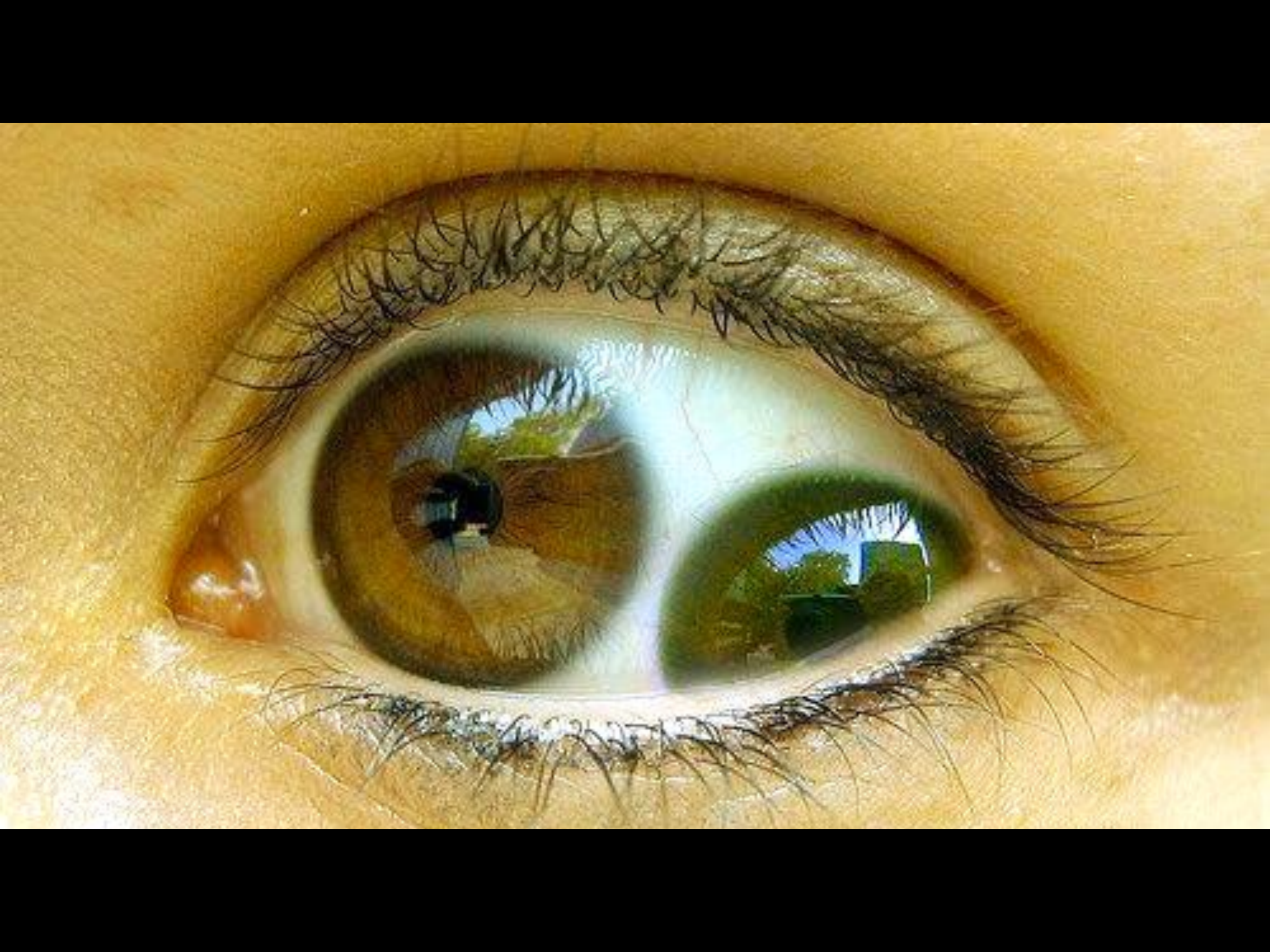
THE SUBSTANCE























Handwritten signature or mark in the bottom left corner.





SINGLE BAG
for collection of 450 ml. of blood

DO NOT VENT

CAUTIONS:
1. Store blood within a 2° range between 1° and 6° C.
2. Cross-match before transfusion.
3. Openly recipient is prone to cross-match.
4. Do not add medication to this blood.
5. ABO blood thoroughly immediately before use and
6. Do not vent before administration. Before use and
7. Do not vent after may have a filter.
8. See circular for disease information.

Collected and typed by: _____

Donor Number _____

ABO Blood Group _____

Rh Type _____

Do not infuse after _____

Serology: Non-reactive to _____

Test _____









PUMPKIN IT UP









CPDA-1 WHOLE BLOOD (HUMAN)
SINGLE BLOOD BAG
For collection of 450 ml. of blood.

DO NOT VENT

- CAUTIONS:**
- 1) Store blood within a 2° range between 1° and 6° C.
 - 2) Cross-match before transfusion.
 - 3) Identify recipient as partner to cross-match.
 - 4) Do not add medication to this blood.
 - 5) Mix blood thoroughly immediately before use and do not warm before administration.
 - 6) Infusion set must have a filter.
 - 7) See circular for dosage information.

Collected and Typed by :

Donor Number

ABO Blood Group

Rh Type

Do not infuse after

Serology : Non-reactive to

Test





For collection of 450 ml. of blood.

CPDA-1 WHOLE BLOOD (HUMAN)
SINGLE BLOOD BAG

DO NOT VENT

- CAUTIONS:**
- 1) Store blood within a 2° range between 1° and 6° C.
 - 2) Cross-match before transfusion.
 - 3) Identify recipient as partner to cross-match.
 - 4) Do not add medication to this blood.
 - 5) Mix blood thoroughly immediately before use and do not warm before administration.
 - 6) Infusion set must have a filter.
 - 7) See circular for dosage information.

Collected and Typed by :

Donor Number

ABO Blood Group

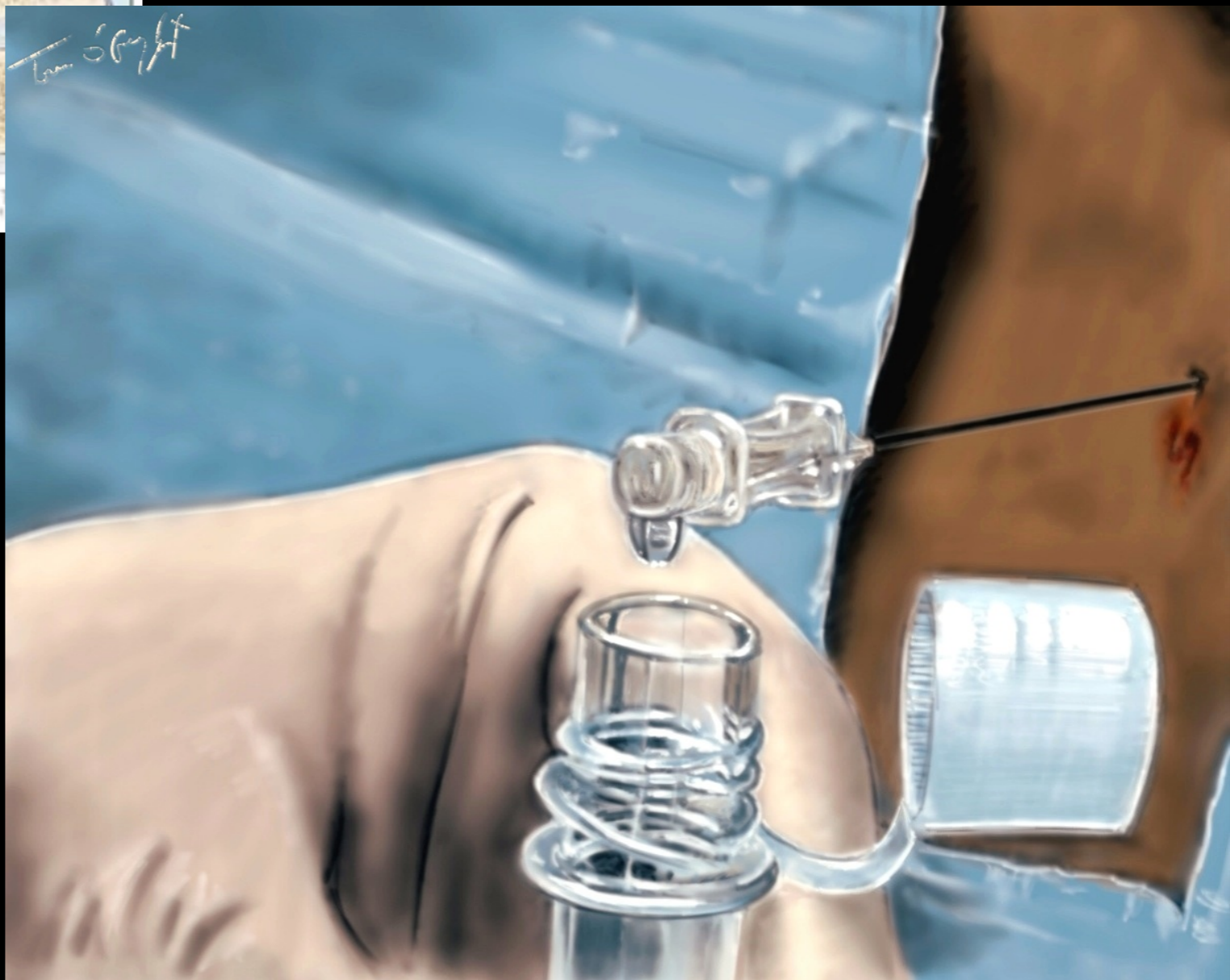
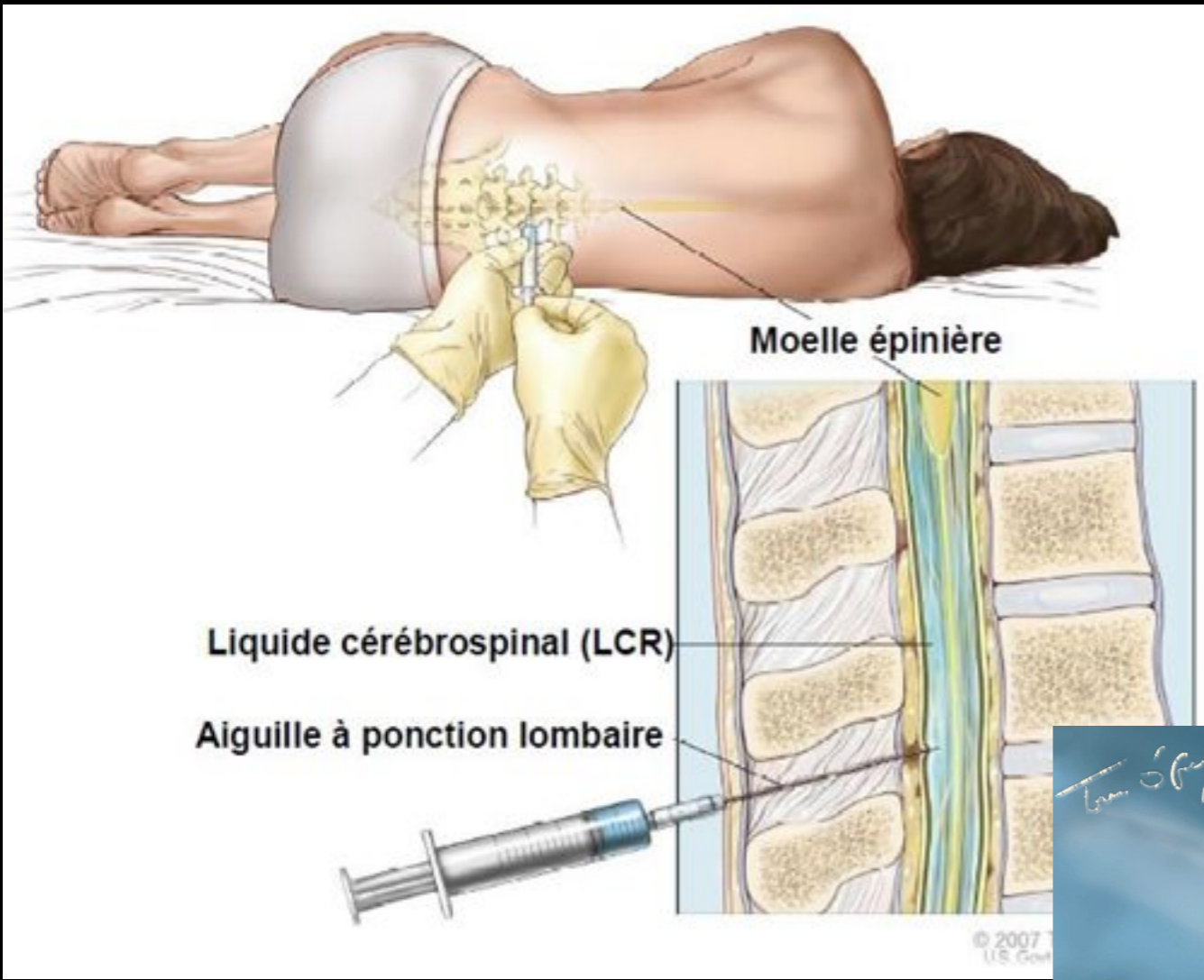
Rh Type

Do not infuse after

Serology : Non-reactive































Coca-Cola

Light

0,2 l

0,5 l













16/12/2011











CPDA-1 WHOLE BLOOD BAG
SINGLE BLOOD BAG
For collection of 450 ml. of blood.

DO NOT

CAUTIONS



















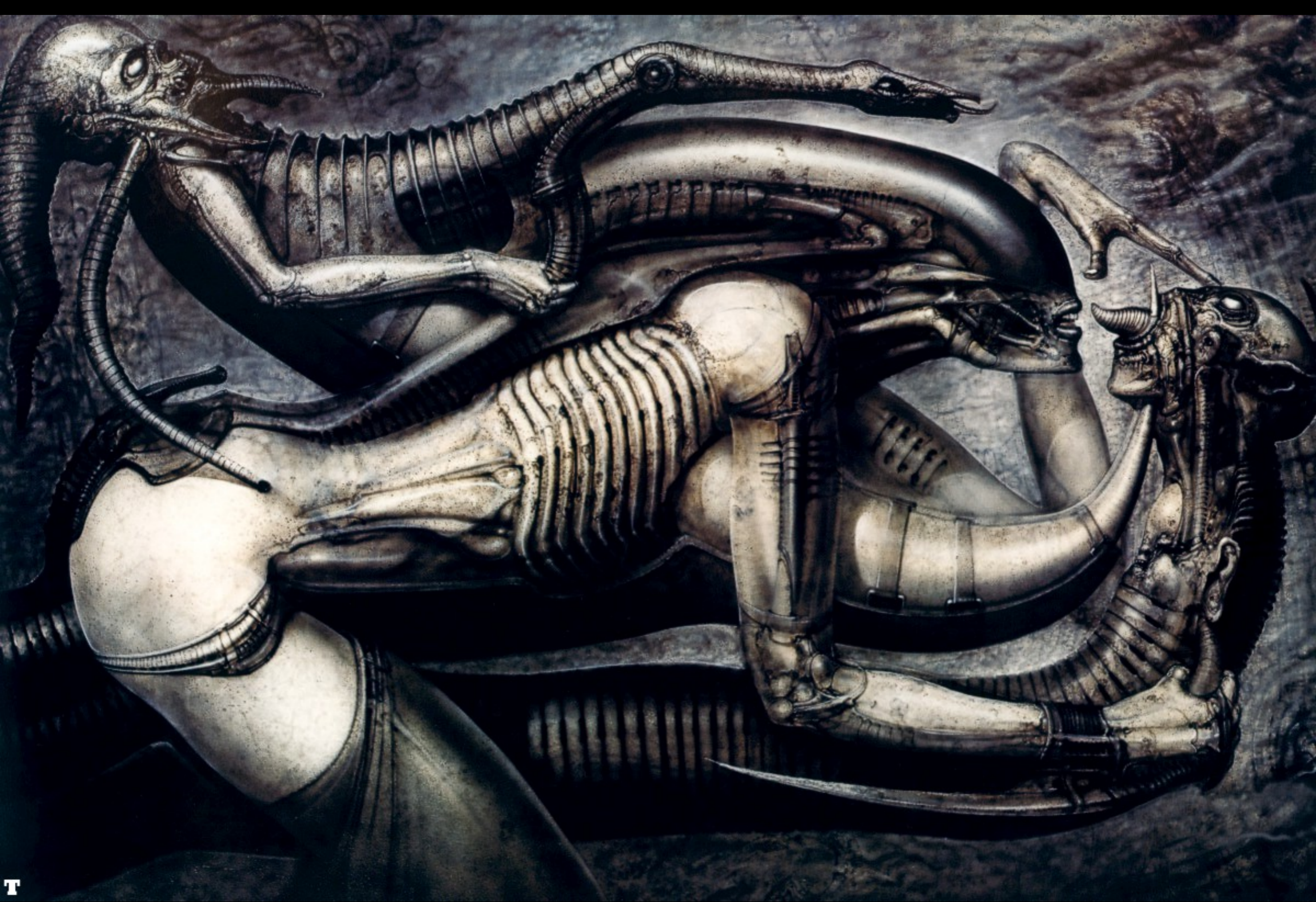












































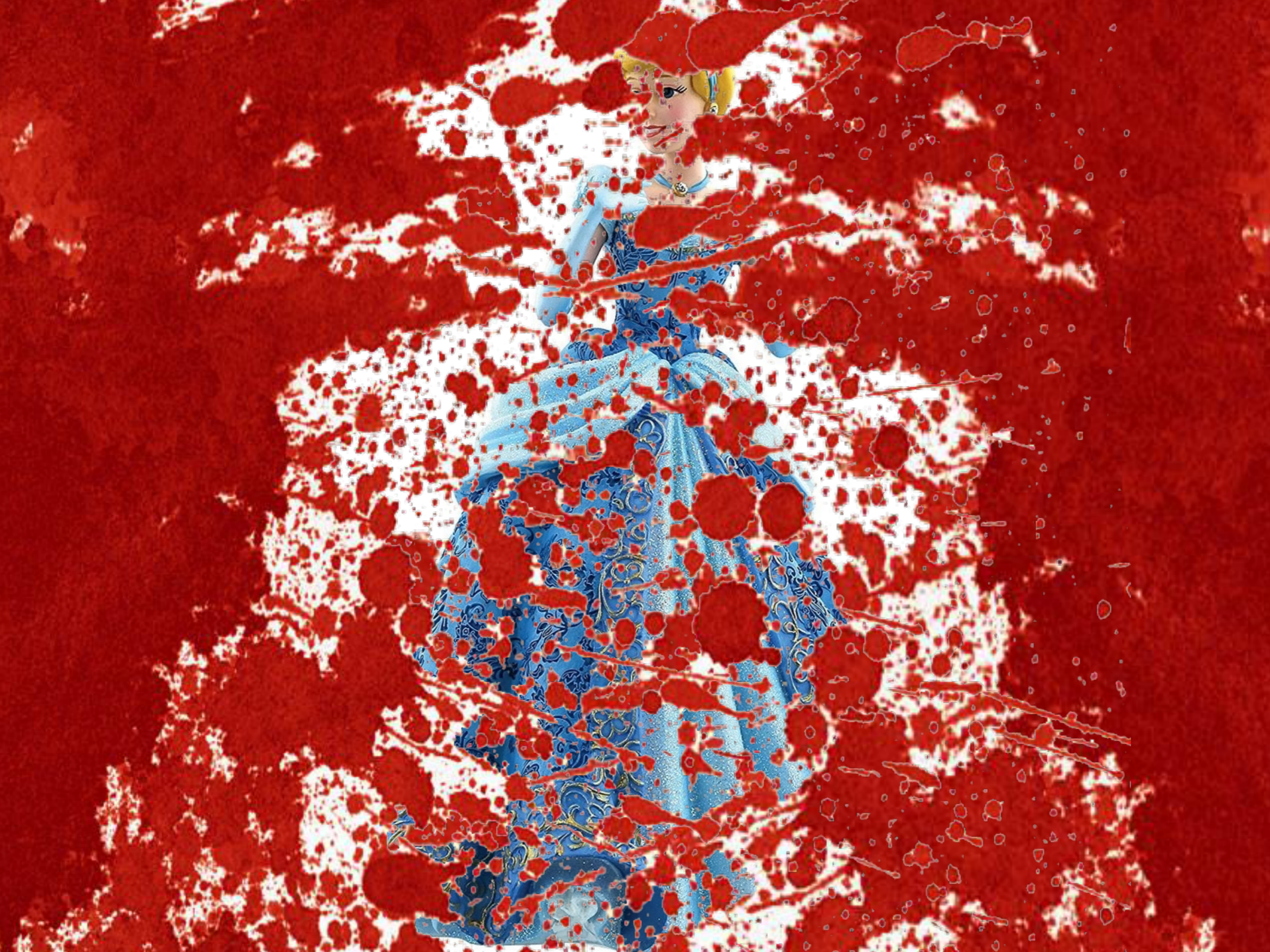


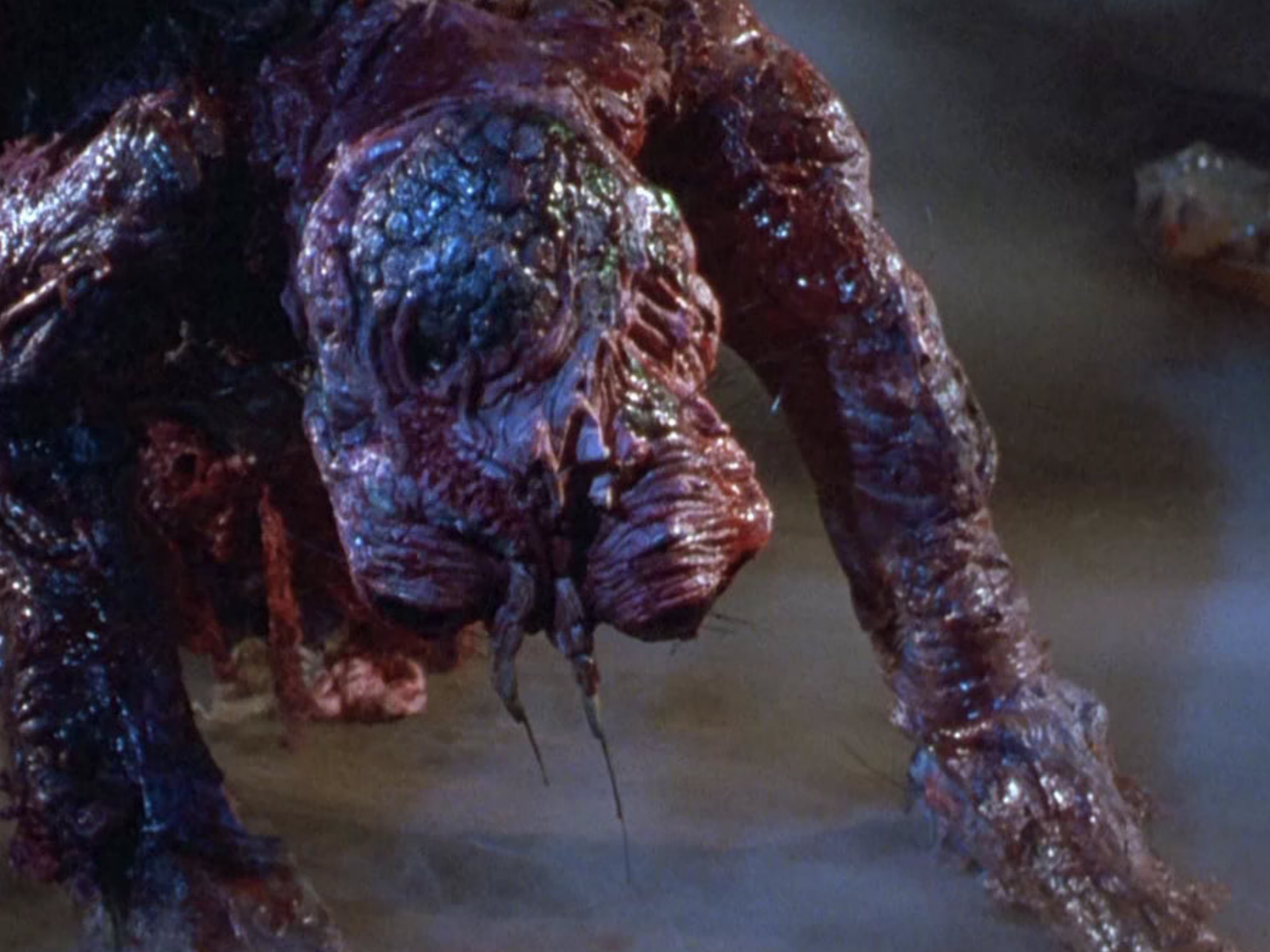


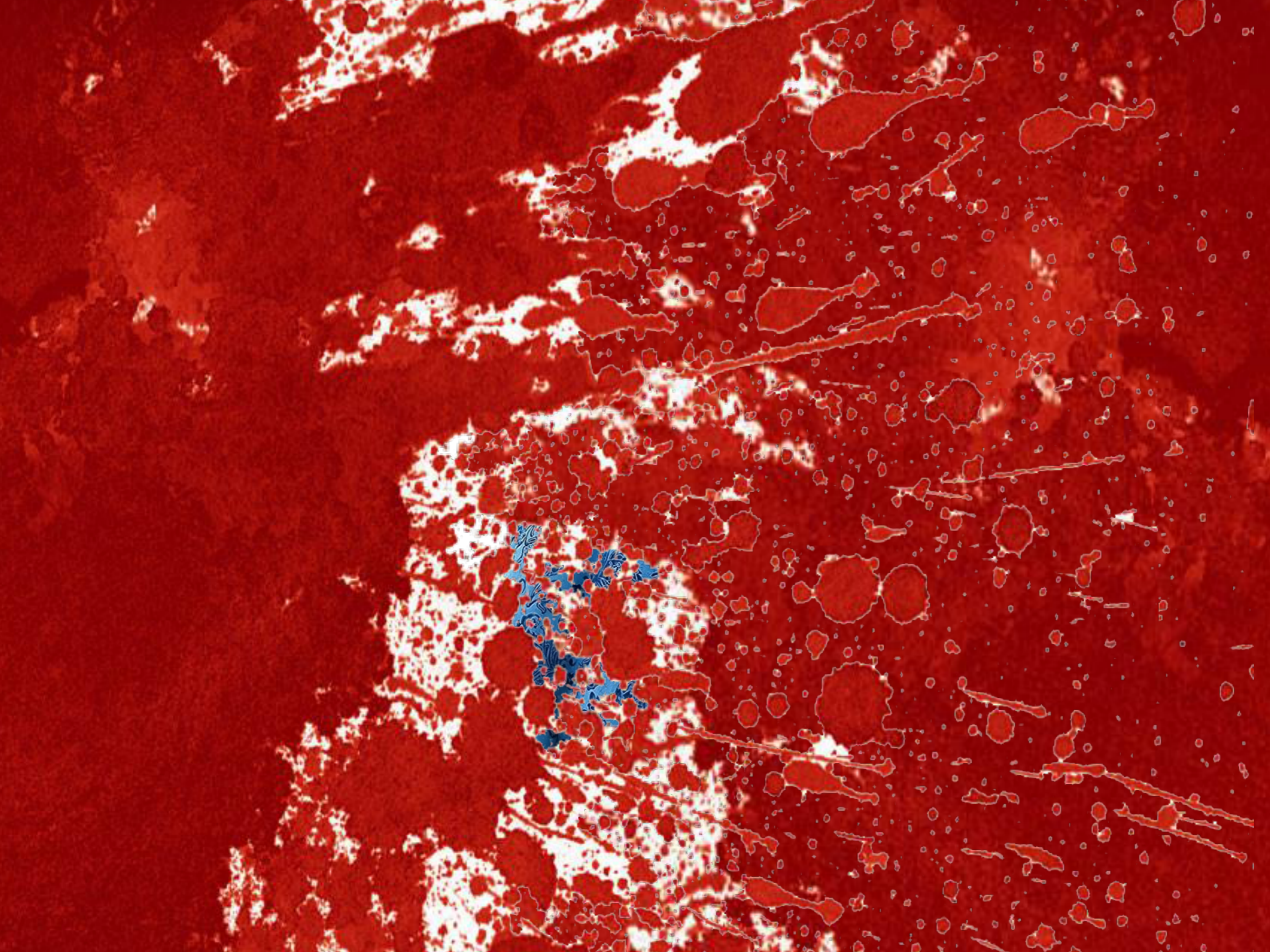




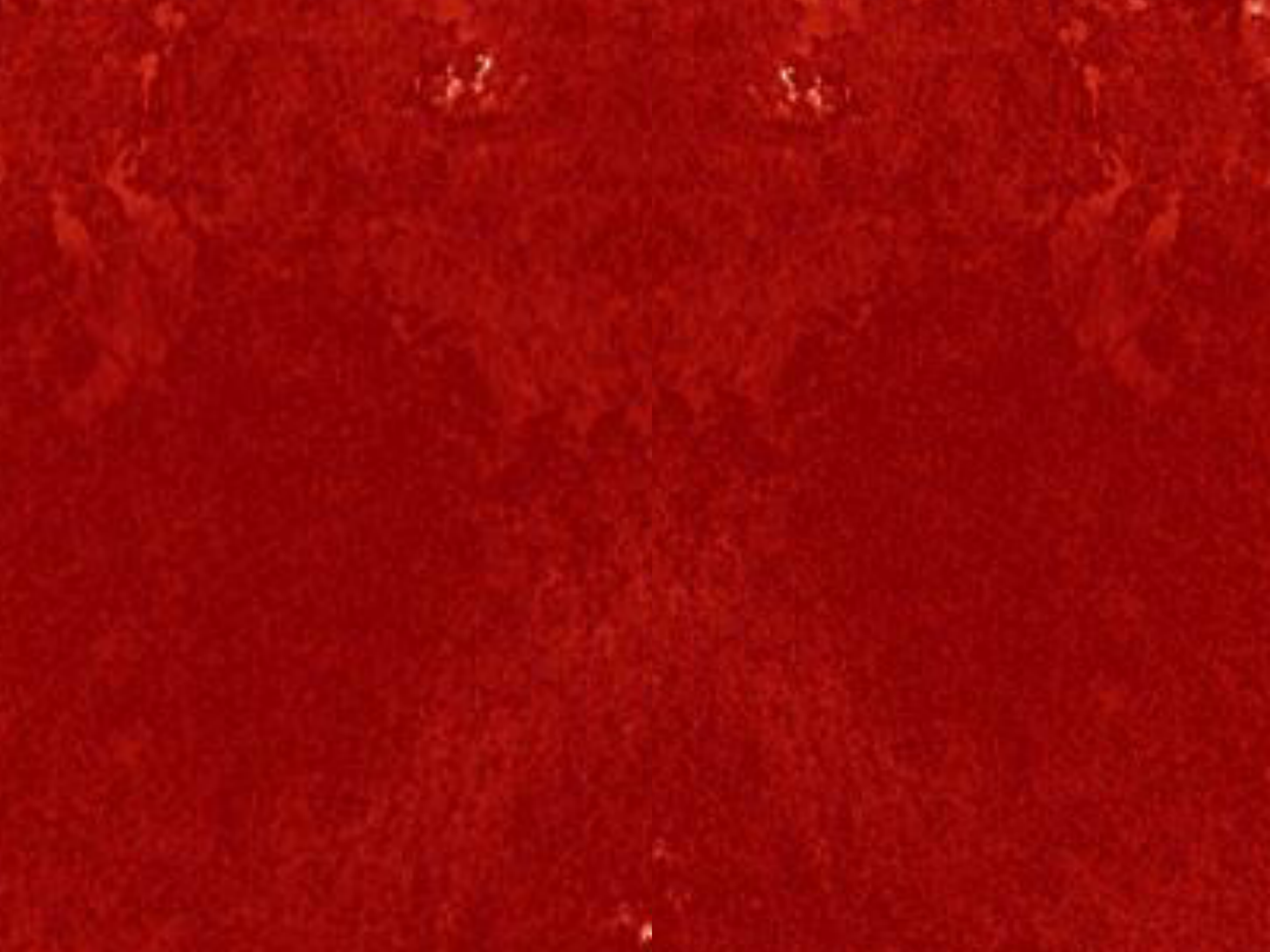












**THE
SUBSTANCE**

A film by

CORALIE FARGEAT