

Welsh Terrier Club of America Judges' Education Seminar



Welsh Terrier – Keys to Breed Type

Prioritize These Traits

- A. Black & Tan with a Double Coat. Coarse Jacket.
- B. Square, Long Legged, Confident Terrier
- C. Welsh Terrier Expression (From the Eyes & Ears)
- D. Good Bone & Substance
- E. Sturdy, Substantial & Moderate
- F. Movement is Effortless with Good Reach & Drive

Key to Type

Which Resembles the Welsh Terrier?



Key to Type



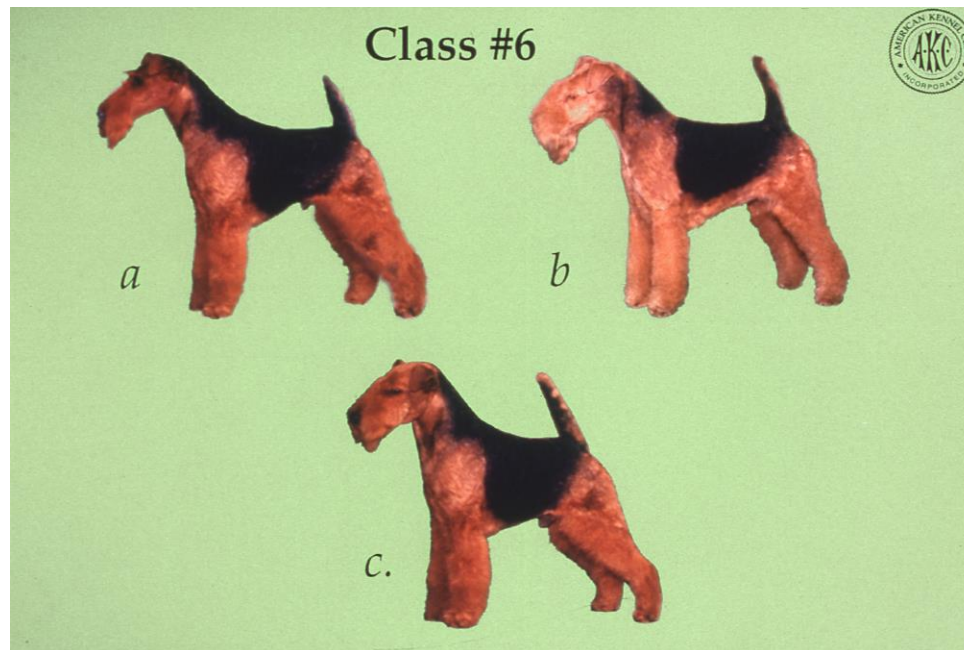
Draft

Hunter (Fox Terrier)

Pony (Lakeland)



Key to Type – Which is the Welsh?



General Appearance

Square Dog (as high as long)

Sturdy

Compact

Rugged-dog

Medium Size

15-15½”

20 pounds

Legs, Underbody, & head are tan

Jacket is black (or grizzle)

Movement is typical terrier trot

Effortless with good reach & drive

Moving on its toes

Expression comes from the set,

color and position of the eyes

combined with the use of the ears



Head

Rectangular

Muzzle

Strong, with powerful, punishing jaws

Only slightly narrower than the backskull

Slight Stop

Backskull & muzzle of equal length and on parallel planes

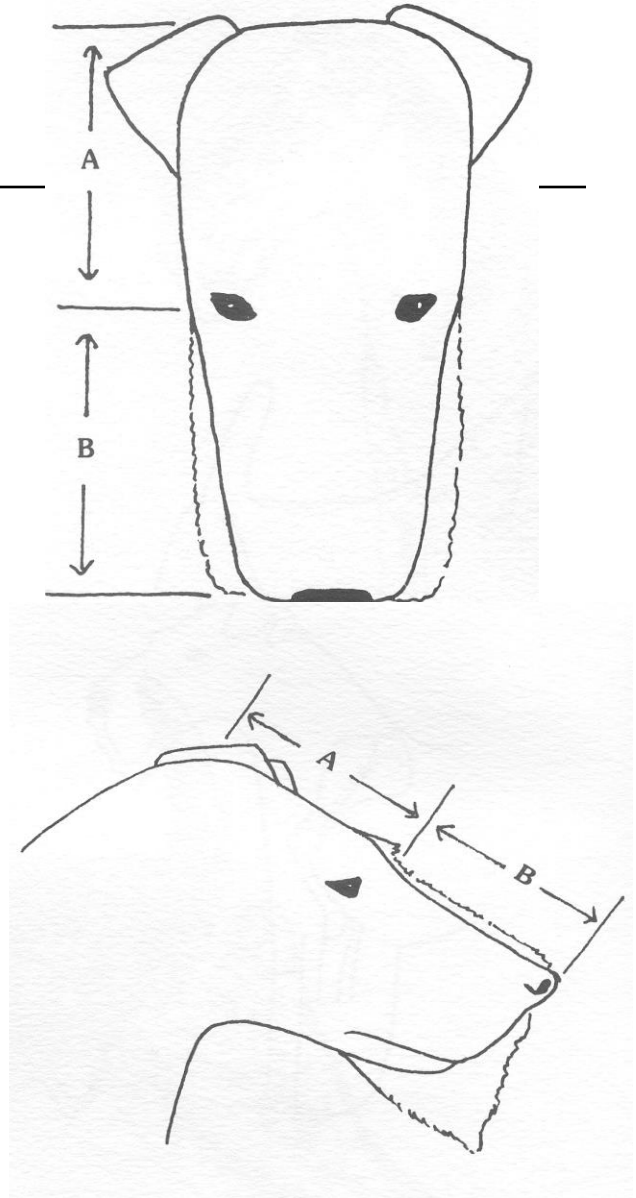
Backskull

Smooth

Wrinkle-free

Flat between the ears (not domed)

Cheeks are flat & clean (not bulging)



Muzzle

½ Length of head

Foreface in front of eyes is “well made up”

Strong & squared off

Lips are black & tight



Muzzle

½ Length of head

Foreface in front of eyes is “well made up”

Strong & squared off

Lips are black & tight



Teeth

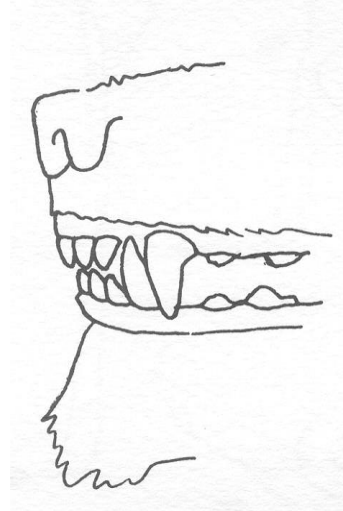
Scissors bite is preferred

Level bite is acceptable

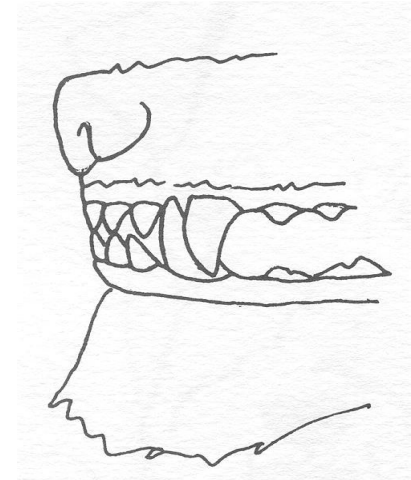
Complete dentition

Teeth are large & strong

Set in powerful, vice-like jaws



Scissors bite



Level bite

Eyes

Small

Dark brown

Almond shaped

Well set in the skull

Placed fairly far apart

Expression

Steady

Alert

Confident



Ears

V-Shaped

Small

Not too thin

Fold is just above the level
of the skull

Carried forward, close to the cheek

Tips fall to, or toward, the outside corner
of the eyes when the dog is at rest

Move slightly up and forward when
at attention



Neck

Moderate length & thickness

Slightly arched

Sloping gracefully into the shoulders

Throat is clean with no excess of skin



Body

Good substance, well ribbed up

Level topline

Loin is strong and moderately short

Good depth of brisket

Moderate width of chest

Male



Female



Front, Forelegs

Front is straight

Shoulders are long, sloping and well laid back



Legs

Straight

Muscular

Upright & Powerful Pasterns



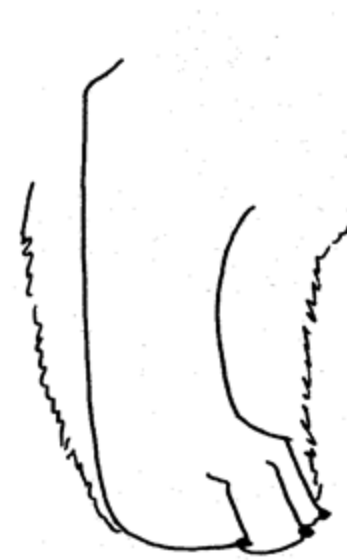
Feet

Small, Round, Cat-like

Thick, black pads

Nails are strong and black

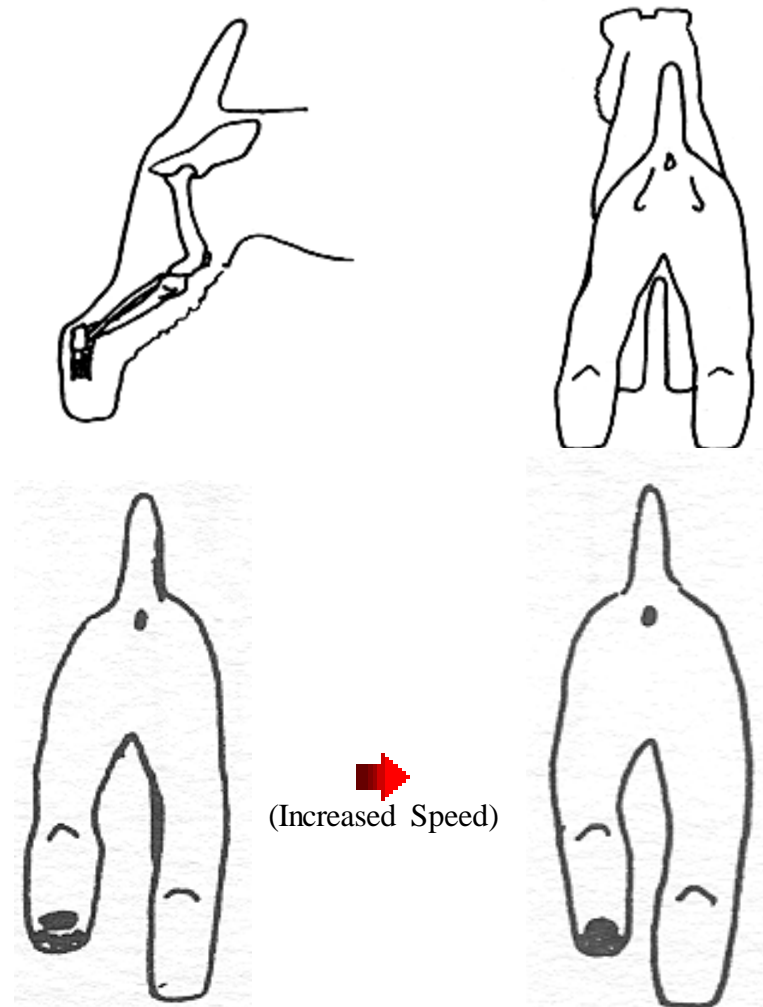
Declaws are removed



Hindquarters

Strong
Muscular
Well-developed Second Thighs
Stifles Well Bent

Hocks
Moderately Straight
Parallel
Short from Joint to Ground



Tail

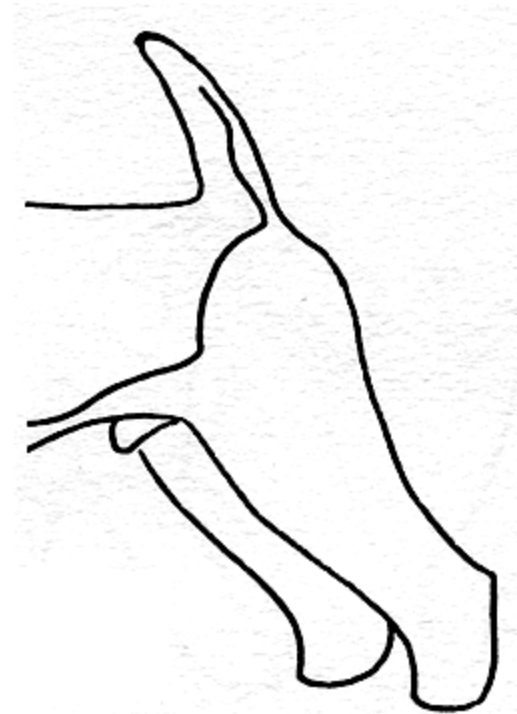
Docked

Level (on an imaginary line) with the Occiput

Completes Square Image of the Whole Dog

Root is Set Well Up on the Back

Carried Upright



Movement

Straight

Free

Effortless

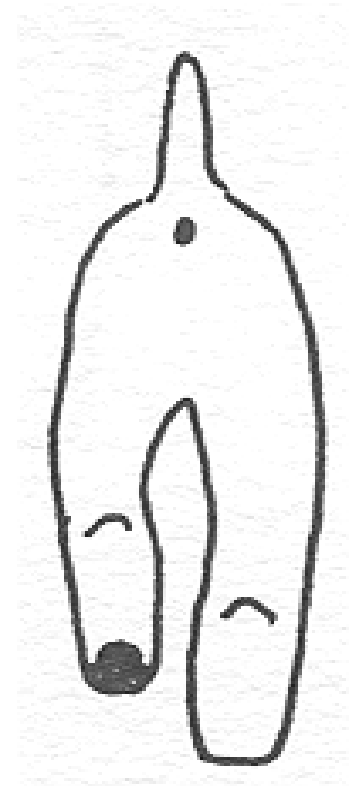
Good Reach in Front

Strong Drive Behind

Feet Naturally Tending to Converge

Toward a Median Line of Travel as

Speed Increases



Coat & Color

Hard, Wiry, Dense
Close-fitting, Thick Jacket
Short, soft undercoat

Furnishings

On Muzzle, Legs and Hind-Quarters are Dense and Wiry

Jacket is Black (Grizzle is also Acceptable)
Spreading up onto the Neck, Down onto the Tail, and Into the Upper Thighs

Legs, Quarters and Head are Clear Tan
Tan is a Deep, Reddish Color With Slightly Lighter Shades Acceptable





Breed History

55BC - Small black and tan dogs that went into the earth after vermin were mentioned by Julius Caesar in as he sent messages back home

Centuries later when Briton won the war over Wales there were still those black and tan Terriers in the northern region of the British Isles

1450 - Welsh poem mentions a “black redbellied terrier bitch”

Mid-1800's - dog shows evolved and people in the North of England showed an Old English Black and Tan Terrier or Old English Wirehaired Black and Tan Terrier

August, 1884 - First shown at the Lleyn and Eifionydd Agricultural Society

1903 - First AKC Champion Recorded

Earthdog Trials

Terrier

The dog of the common man

Helping to hunt his food and protect domain from predators and vermin

Diggers who worked in the soil

Bred with generally narrow fronts and straight legs

When digging, loose earth propelled between spread rear legs

Drop ears prevent loose earth from entering ear canals

Earthdog Den Trials

Simulated hunting situation

Terrier tracks game scent

Enters animal's tunnelworks (barking, engaging, etc.) the animal until the vermin either bolts (flees) from the earth

Simulated earths are trenches dug and liners inserted

Trench or path is scented with rat

Caged rat serves as the simulated quarry

Welsh, Wire and Lakeland Comparison



Size	15-15½”	15½”	14½-15”
Weight	20#	18#	17#
Head	Foreface is strong, with powerful, punishing jaws	Foreface should gradually taper from eye to muzzle...full, well made up Relieved from “wedginess” by a little delicate chiseling	Skull..moderately broad Muzzle is strong...good fill-in beneath the eyes
Ears	Folded just above topline of the skull	Topline of folded ear well above level of skull	Fold just above top of skull
Eyes	Small, dark-brown, almond shaped Placed fairly far apart	Dark in color, moderately small Circular Not too far apart	Moderately small Somewhat oval Fairly wide apart Warm brown to black

Welsh, Wire and Lakeland Comparison



Body	Good substance well ribbed up good depth of brisket moderate chest width	Brisket deep front ribs moderately arched back ribs deep, well sprung	Deep and relatively narrow Strong and supple Well-sprung ribs are moderately rounded off the vertebrae
------	---	---	--

Breed Type



Draft

Hunter (Fox Terrier)

Pony (Lakeland)



Breed Type – Draft Horse



Welsh – Keys to Breed Type

Square, Long-Legged Terrier
50% Height from Leg/Body
Sturdy, Substantial & Moderate
Confident
Good bone and substance
Double coated Black & Tan
Ears break just above the level
of the skull



Quote from William "Billy" Kendrick

Let it not be forgotten that the standard weight for a Welsh exceeds standard weight for a Fox Terrier by two pounds. Yet standard height for a Welsh is one-half inch less at the shoulder than a Fox Terrier. It can be seen, therefore that a Welsh of true type must carry considerable bulk. Ample bone and big rib cages with flat skulls of reasonable width and correct Welsh ears (a far cry from the overdone, tiny ears, set high on the head) cannot go with shelly bodies, legginess and narrow skulls with overdone long forefaces."